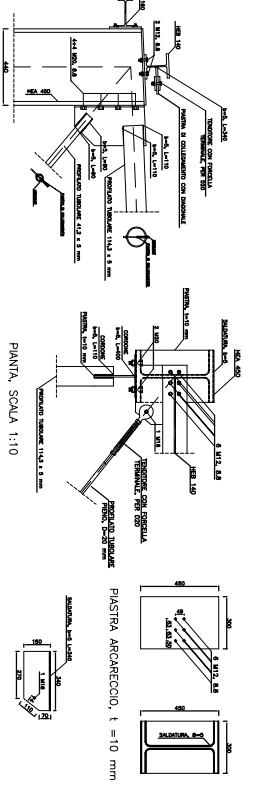
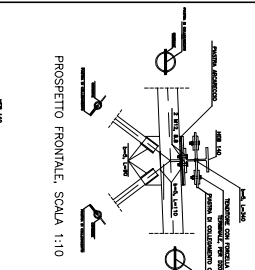


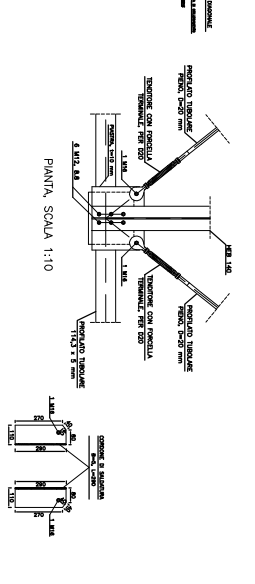
CONTOVERNO DI FALDA, SCALA 1:50



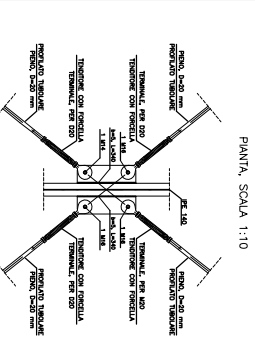
PROSPETTO FRONTALE, SCALA 1:10



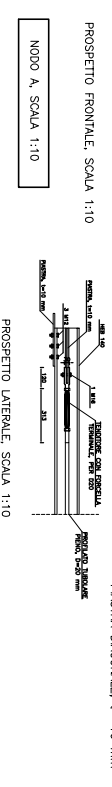
PROSPETTO FRONTALE, SCALA 1:10



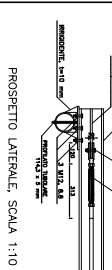
PIANTA, SCALA 1:10



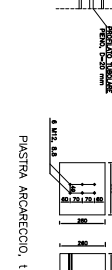
PIANTA, SCALA 1:10



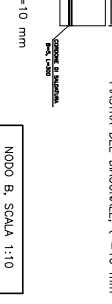
PROSPETTO LATERALE, SCALA 1:10



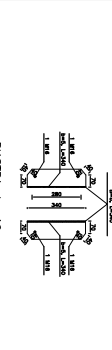
PROSPETTO LATERALE, SCALA 1:10



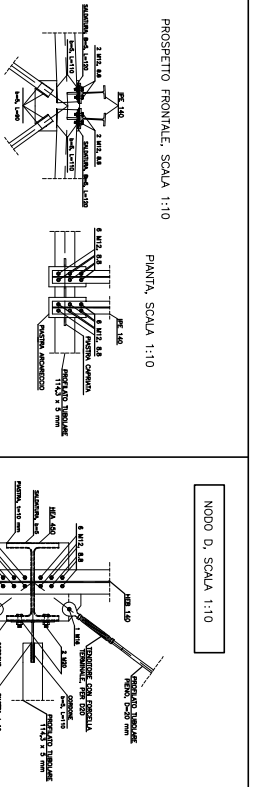
PROSPETTO LATERALE, SCALA 1:10



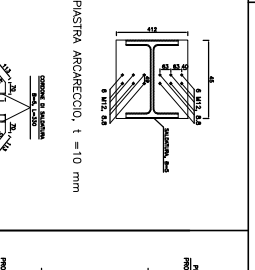
PROSPETTO LATERALE, SCALA 1:10



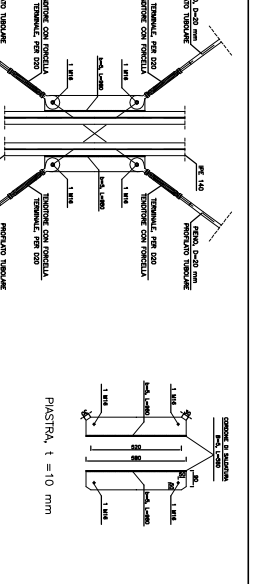
PIANTA, SCALA 1:10



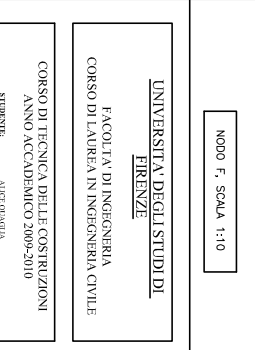
PROSPETTO FRONTALE, SCALA 1:10



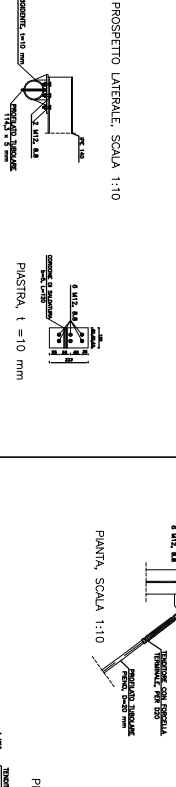
PROSPETTO FRONTALE, SCALA 1:10



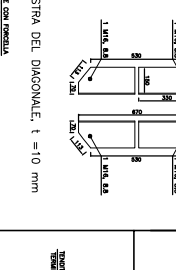
PIANTA, SCALA 1:10



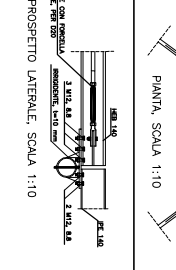
PIANTA, SCALA 1:10



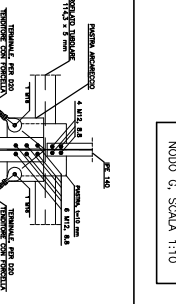
PROSPETTO LATERALE, SCALA 1:10



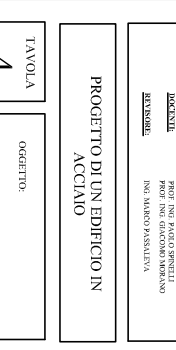
PROSPETTO LATERALE, SCALA 1:10



PROSPETTO LATERALE, SCALA 1:10



PROSPETTO LATERALE, SCALA 1:10



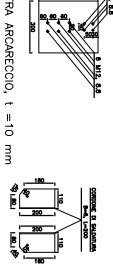
PIANTA, SCALA 1:10



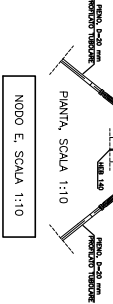
NODO C, SCALA 1:10



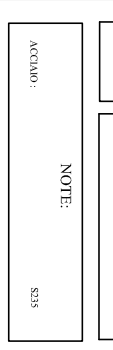
NODO D, SCALA 1:10



NODO E, SCALA 1:10



NODO F, SCALA 1:10



NODO G, SCALA 1:10

UNIVERSITA' DEGLI STUDI DI  
FIRENZE  
FACOLTA' DI INGEGNERIA  
CORSO DI LAUREA IN INGEGNERIA CIVILE

CORSO DI TECNICA DELLE COSTRUZIONI  
ANNO ACCADEMICO 2009/2010

SEDEBENTE  
DIRETTORE  
SEGRETERIA

ALESSIO DI CARIA  
PROF. ING. PIETRO SPINELLI  
PROF. ING. GIACOMO MARIANO  
ING. MARCO VASSALINA

PROGETTO DI UN EDIFICIO IN  
ACCIAIO

TAVOLA  
4

OGGETTO:  
CONTOVERNO DI FALDA

NOTE:

ACCIAIO: S235